

Anti-IL-4R hlgG1 Antibody(12B5)

产品信息

GM-46268AB-10	10 µg
GM-46268AB-100	100 µg
GM-46268AB-1000	1 mg

抗体信息

Species Reactivity	Human
Clone	12B5
Source/Isotype	Monoclonal human IgG1, κ
Application	Flow cytometry; Block assay; Bioactivity-ELISA
Specificity	Detects IL-4R.
Gene	IL-4R
Other Names	CD124; IL4RA; IL-4RA;
Gene ID	3566(human)
Background	The interleukin 4 receptor protein (CD124; IL4RA; IL-4RA) is a type I transmembrane protein that can bind interleukin 4 and interleukin 13 to regulate IgE production. The encoded protein also can bind interleukin 4 to promote differentiation of Th2 cells. A soluble form of the encoded protein can be produced by proteolysis of the membrane-bound protein, and this soluble form can inhibit IL4-mediated cell proliferation and IL5 upregulation by T-cells. Allelic variations in this gene have been associated with atopy, a condition that can manifest itself as allergic rhinitis, sinusitis, asthma, or eczema. Polymorphisms in this gene are also associated with resistance to human immunodeficiency virus type-1 infection
Storage	Store at 2-8°C short term (1-2 weeks).Store at ≤ -20°C long term. Avoid repeated freeze-thaw.
Formulation	Phosphate-buffered solution, pH 7.2.
Endotoxin	< 1 EU/mg, determined by LAL gel clotting assay

Data Examples

Flow cytometry

H_IL4R CHO-K1 Cell Line (Catalog # GM-C01521) was stained with Anti-IL-4R hlgG1 Antibody(12B5) (Catalog # GM-46268AB) or isotype control antibody, followed by anti-Human IgG APC-conjugated Secondary Antibody.

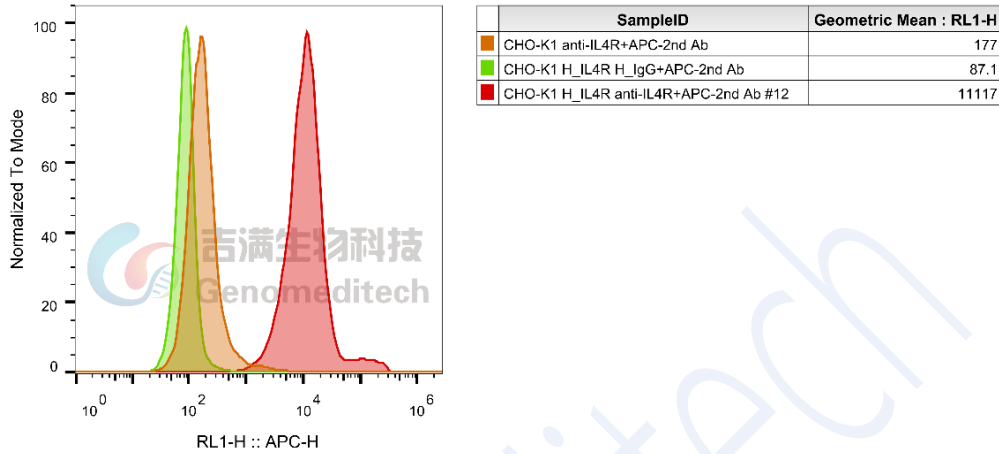


Fig. FACS

Block assay

Anti-IL-4R hlgG1 Antibody(12B5) (Catalog # GM-46268AB) inhibits IL-4/IL-13 Reporter 293 Cell Line (Catalog # GM-C01511) Luminescence induced by Recombinant Human IL-4. IC50 for this effect is 0.002585 $\mu\text{g/mL}$.

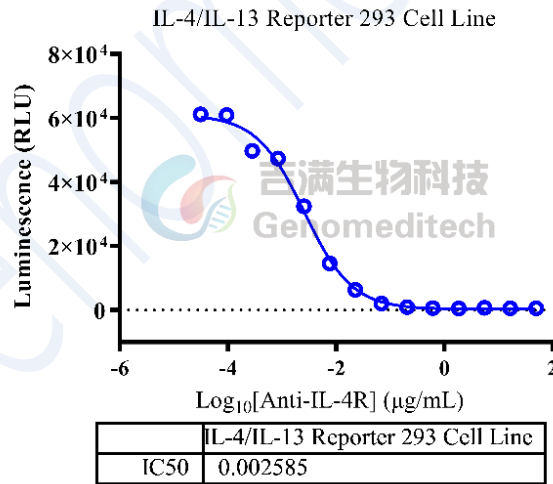


Fig. assay

Bioactivity-ELISA

Human IL-4R alpha Protein; mFc Tag (Catalog # GM-87879RP) was immobilized at 5 $\mu\text{g/ml}$ (100 $\mu\text{L/well}$). Increasing concentrations of Anti-IL-4R hlgG1 Antibody(12B5) (Catalog # GM-46268AB) were added.

Bioactivity-ELISA

0.5 μ g Human IL-4R alpha Protein; mFc Tag of per well

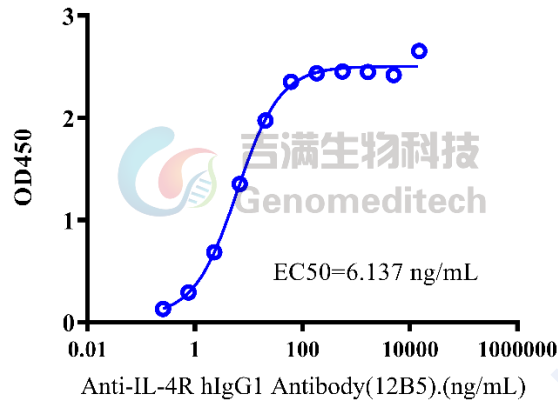


Fig. assay